



The University of Texas at Austin
Dell Medical School

PROGRESS & IMPACT

**ALIGNED WITH THE DELL MED /
CENTRAL HEALTH AFFILIATION
AGREEMENT**

JULY 2023





OUTLINE

» AFFILIATION AGREEMENT & INTENT

» PERMITTED INVESTMENTS

- Integrating Care & Services to Improve Health of the Safety-Net Population
- Innovation in Education & Training
- Advancing Research & Discovery

» THE FUTURE OF OUR PARTNERSHIP





The University of Texas at Austin
Dell Medical School

AFFILIATION AGREEMENT



CENTRAL HEALTH



A Central Health and Seton partnership



TEXAS

The University of Texas at Austin

Affiliation Agreement signed **July 2014**

- \$35MM annually
- 25 years
- Specifies permitted investments





AFFILIATION AGREEMENT

An **essential aspect** of Central Health's vision for Travis County is **the organization, construction and operation of a medical school by UT.**

UT System funding of \$25 million per year for Dell Med plus \$5 million per year for faculty recruitment, and **local community support a total of \$35 million per year** for the direct support of the UT Austin Dell Medical School

Effect of the Affiliation Agreement:

- Expand the health care infrastructure for the region
- Increase access and improve quality of care for patients
- Provide for funding for a medical school (which is necessary to have a higher-functioning academic health science center level teaching hospital, beyond what was offered at Brackenridge)

As presented to Central Health Budget Committee by Mike Geeslin, May 18, 2023



AFFILIATION AGREEMENT

Permitted investments include the provision of direct operating support to UT that will be used by UT in its discretion to facilitate and enhance:

- **Development, accreditation and ongoing operation** of the UT Austin Dell Medical School and its administrative infrastructure;
- **Recruitment, retention and work** of the UT Austin Dell Medical School faculty, residents, medical students, researchers, administrators, staff and other clinicians; and
- Other **related activities and functions** as described in the recitals to this agreement.

Source: The University of Texas at Austin, Central Health & Community Care Collaborative Affiliation Agreement





ONGOING REPORTING TO CENTRAL HEALTH

In addition to other reporting, UT Health Austin/Dell Medical School provides additional operational and clinical quality reporting on services provided pursuant to the Master Services Agreement.

Examples include:

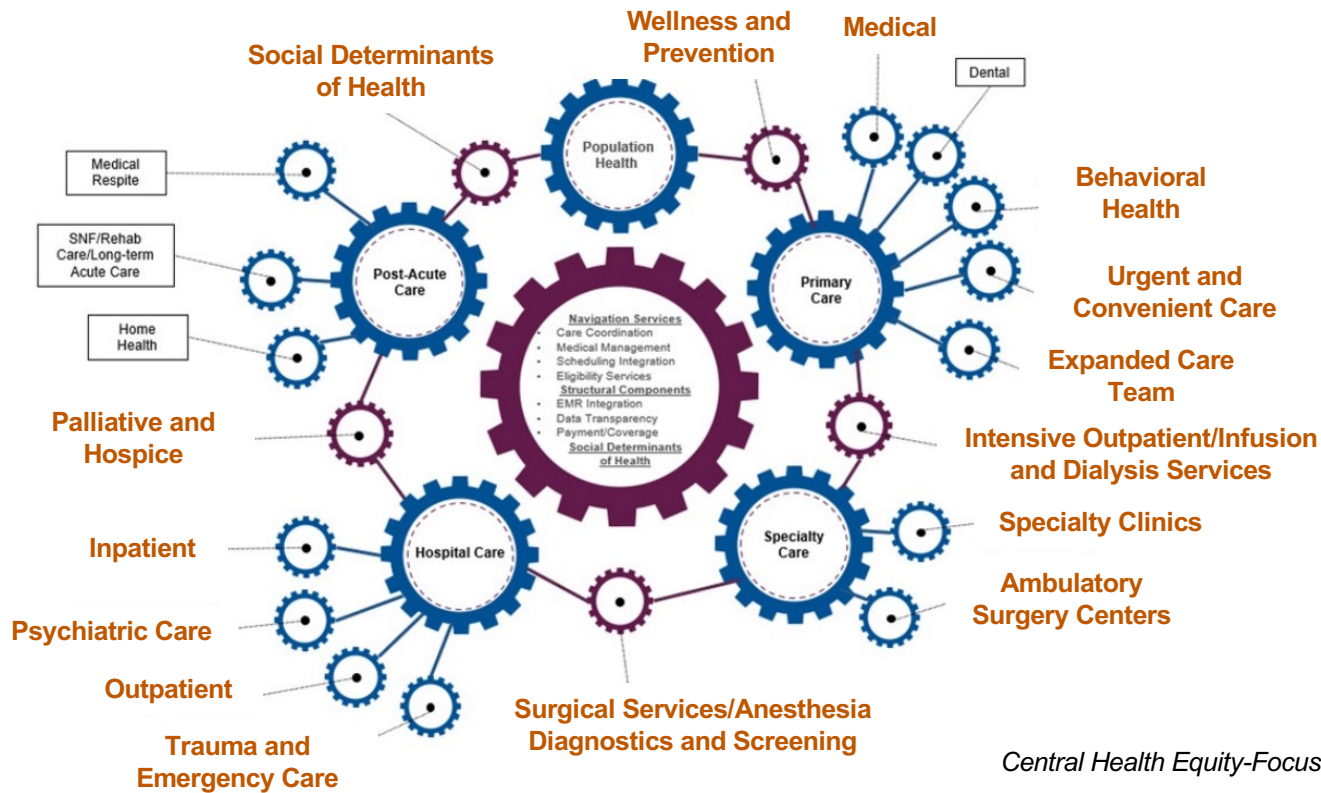
- Patient/service volumes
- Patient demographic summaries
- Standard utilization data for services provided
- Average times between referrals and appointments
- Appointment and procedure no-show rates
- Hospital transfers as a percentage of total ambulatory surgery center-based surgical cases attempted
- Surgical site infection rates
- Patient satisfaction/net promoter scores
- Surgical cases with unexpected findings at the time of surgery
- Condition-specific patient reported outcomes measures

As presented to Central Health Budget Committee by Mike Geeslin, May 18, 2023



COLLABORATIVELY ADDRESSING GAPS IN INTEGRATED CARE DELIVERY

COMPONENTS OF A HIGH-FUNCTIONING SYSTEM



Source:
Central Health Equity-Focused Service Delivery Strategic Plan



The University of Texas at Austin
Dell Medical School

SAFETY-NET CARE NETWORK

Partners include:





OUR PROGRESS AS PARTNERS

2012

- Prop. 1 approved

2014

- Affiliation Agreement signed

2014

- First faculty hired

2015

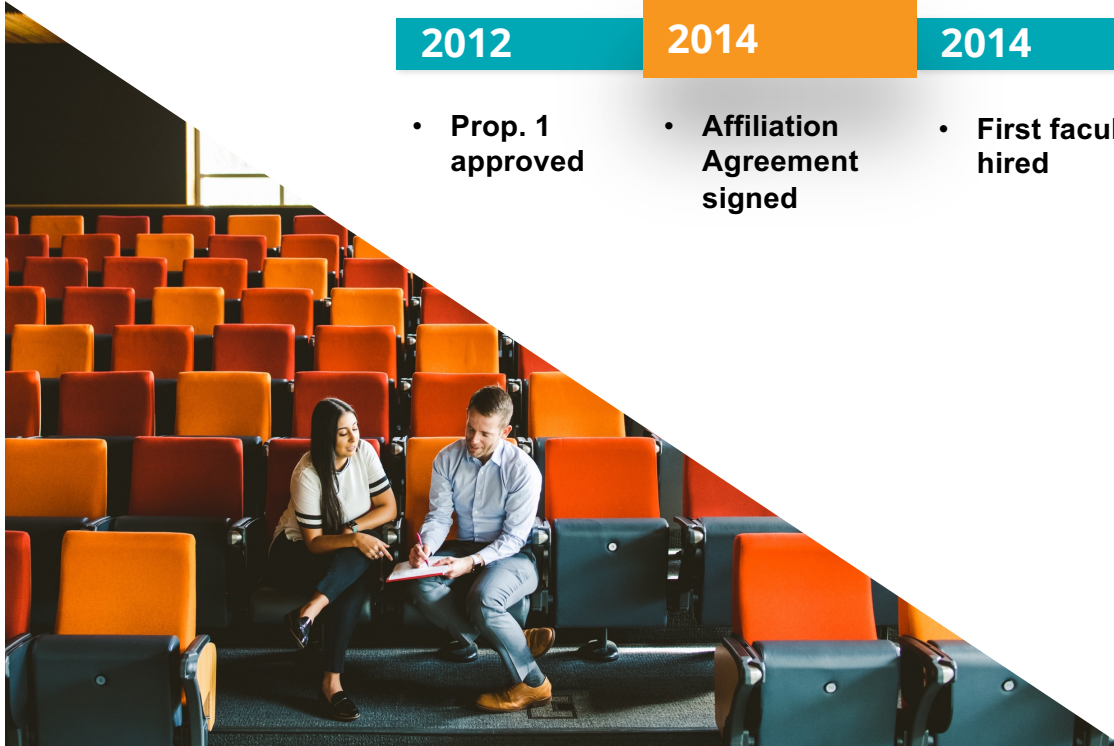
- Residency program sponsorship begins

2016

- First classes

2017

- UT Health Austin opens
- First master services agreement executed





OUR PROGRESS AS PARTNERS

CLAUDIA LUCCHINETTI DESIGNATED DELL MED DEAN &
UT SENIOR VICE PRESIDENT FOR MEDICAL AFFAIRS

2018

- Austin State Hospital redesign launches

2020

- First students graduate
- COVID-19 collaboration & support

2021

- First peds heart transplant
- Joint recruitment of Central Health CMO

2021

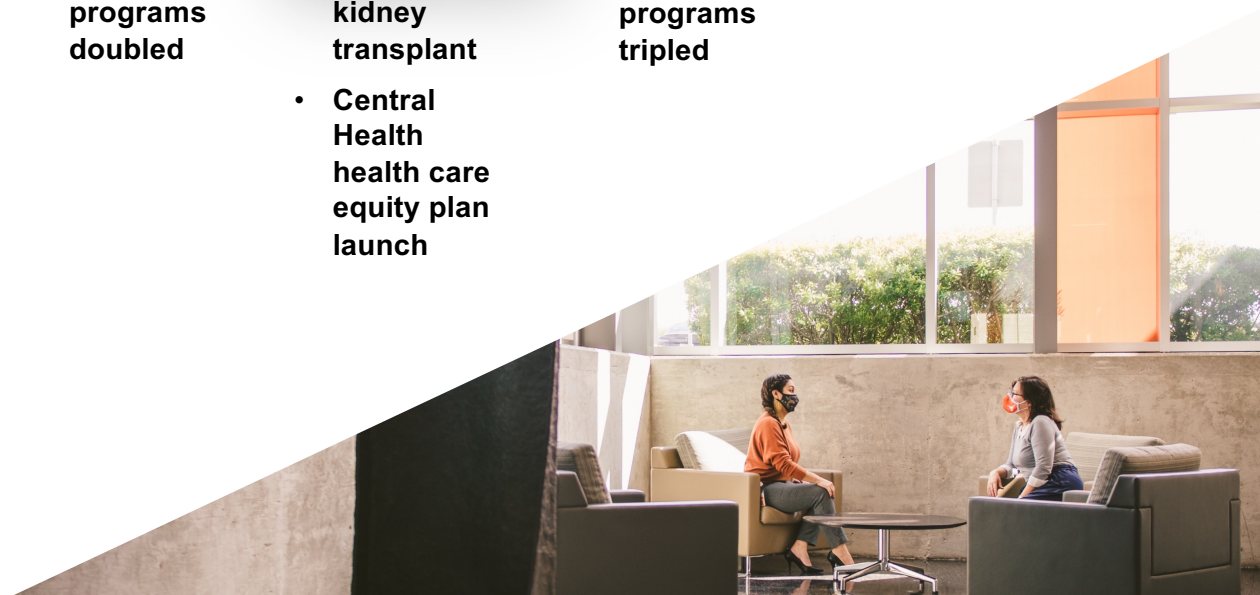
- No. of GME programs doubled

2022

- First peds kidney transplant
- Central Health health care equity plan launch

2023

- No. of GME programs tripled





DELL MED FACULTY INFLUENCE

NATIONALLY RECOGNIZED DOCTORS, DEDICATED TO IMPROVING HEALTH IN CENTRAL TEXAS



Jane Edmond, M.D., Chair, Ophthalmology

President-elect, American Academy of Ophthalmology

Kevin Bozic, M.D., Chair, Surgery & Perioperative Care

President, American Academy of Orthopaedic Surgeons

Charles Nemeroff, M.D.,

Chair, Psychiatry & Behavioral Sciences

President, Anxiety & Depression Association of America

George Macones, M.D., Chair, Women's Health

President, American Board of Obstetrics and Gynecology

**Stuart Wolf, M.D., Executive Associate Chair,
Surgery & Perioperative Care**

President, American Board of Urology



ATTRACTING TOP DOCTORS TO AUSTIN

Dell Med is directly or indirectly connected to attracting **449 new doctors** — representing **63% of faculty** — to Austin since 2014.



449 PHYSICIANS RELOCATED TO AUSTIN

*Total regular faculty employed by partners: 394
**Total regular faculty employed by Dell Med: 323

Updated: June 2023

FROM TOP DOCTORS, TOP TEAMS:



**ADVANCED PEDIATRIC
HEART CARE**
CHARLES FRASER JR., M.D.



**COMPLEX FETAL
MEDICINE**
KENNETH MOISE JR., M.D.



**MORE ABDOMINAL
TRANSPLANTS**
NICOLE TURGEON, M.D.



**ADULT
CARDIOVASCULAR CARE**
GEORGE ARNAOUTAKIS, M.D.



The University of Texas at Austin
Dell Medical School

EXPANDING ACCESS TO EYE CARE

JANE EDMOND, M.D.



HIRED 4 FACULTY

DOUBLED COMMUNITY FACULTY
ROSTER TO 45



ESTABLISHED EYE CLINIC

MITCHEL & SHANNON WONG EYE
INSTITUTE



OPHTHALMOLOGY RESIDENCY PROGRAM

3 RESIDENTS EACH YEAR,
FUNDED BY CENTERS FOR MEDICARE &
MEDICAID SERVICES





EXPANDING ACCESS TO EYE CARE

INCREASING CARE FOR MAP PATIENTS

PATIENT TESTIMONIAL

**“ THANK YOU FOR YOUR PATIENCE AND
FOR BEING SO KIND. YOU MADE ME FEEL VERY
GOOD.
ALL THE STAFF ... ARE EARTHLY ANGELS. GOD
BLESS YOU FOREVER.”**



The University of Texas at Austin
Dell Medical School

INTEGRATING CARE & SERVICES TO IMPROVE HEALTH OF THE SAFETY-NET POPULATION

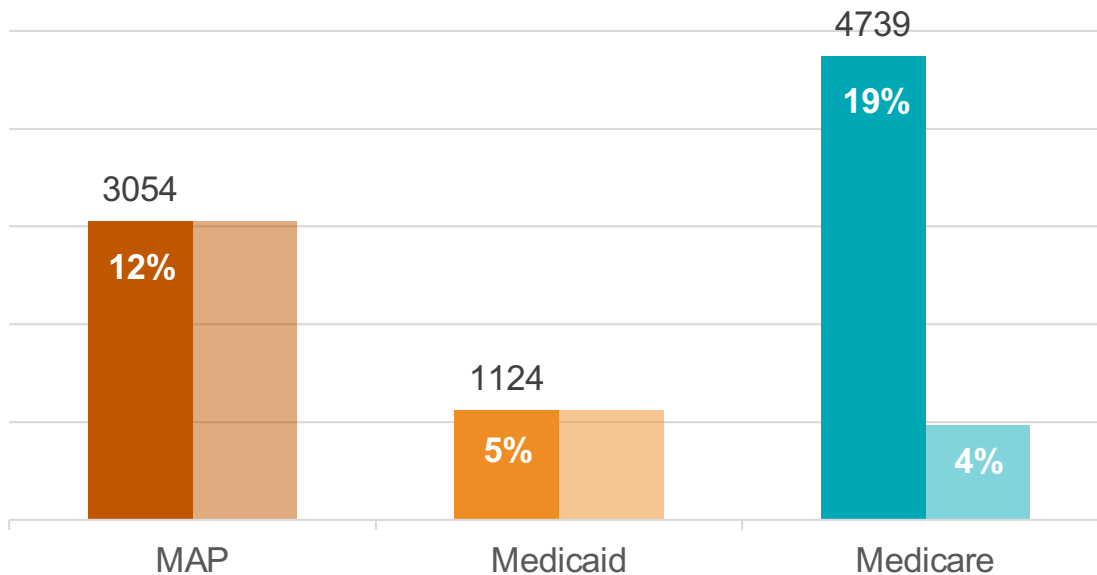




UT HEALTH AUSTIN: IMPROVING & INTEGRATING CARE

CARING FOR OUR COMMUNITY

In the last year, **8,917 unique patients** at UT Health Austin **used MAP, Medicaid or Medicare** — overall, about **36%** of all unique patients*.



Years calculated June 2022 to May 2023

*24,774 total unique patients

IN THE LAST YEAR, 2022-2023:



24K+
UNIQUE PATIENTS



85K+
PATIENT VISITS

UT HEALTH AUSTIN INCLUDES:



60+ CLINICS
& PROGRAMS



AMBULATORY
SURGERY CENTER



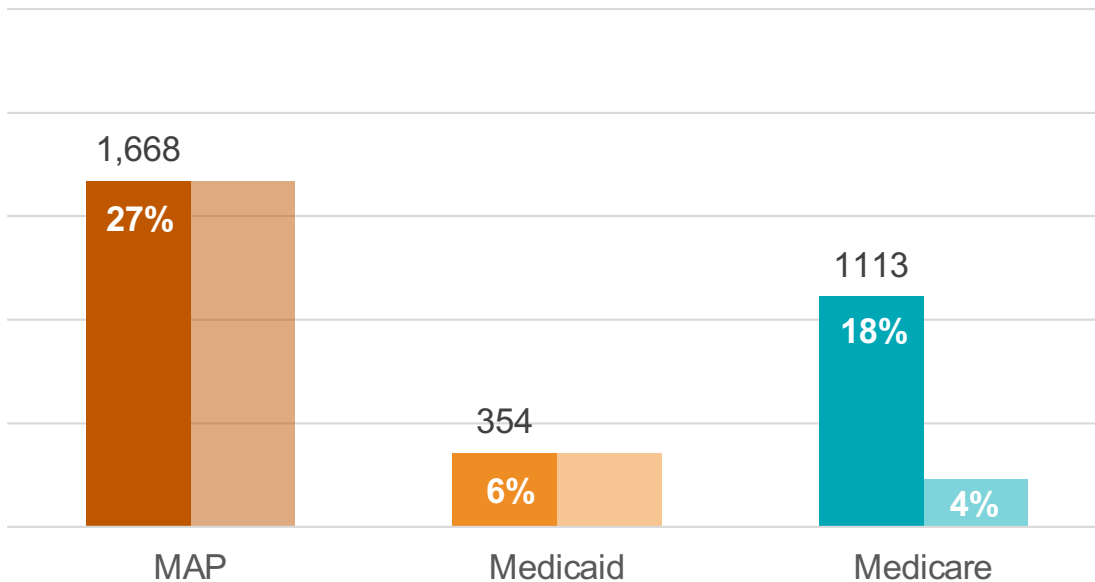
Hi, my name is Donna Shanor.



UT HEALTH AUSTIN: IMPROVING & INTEGRATING CARE

MUSCULOSKELETAL CARE

In the last year, **50% of unique patients** (3,128 of 6,283) at the Musculoskeletal Institute at UT Health Austin **used MAP, Medicaid or Medicare.**



Years calculated June 2022 to May 2023

IN THE LAST YEAR, 2022-2023:



6,283

UNIQUE PATIENTS



14,663

PATIENT VISITS

SINCE LAUNCH IN 2017:



20,049

UNIQUE PATIENTS



58,326

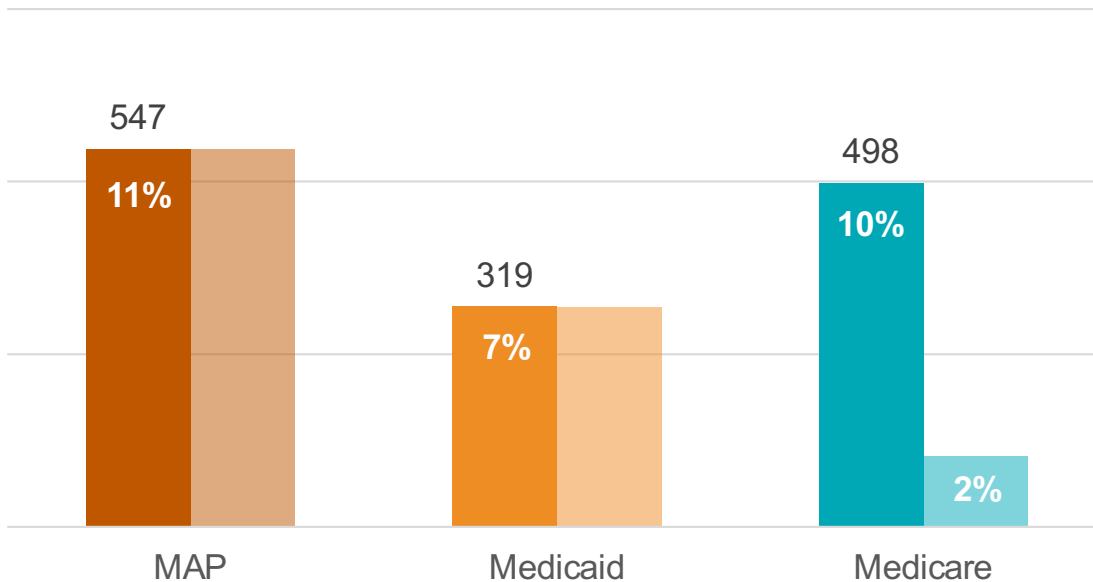
PATIENT VISITS



UT HEALTH AUSTIN: IMPROVING & INTEGRATING CARE

WOMEN'S HEALTH

In the last year, **29% of unique patients** (1,359 of 4,761) in Women's Health at UT Health Austin **used MAP, Medicaid or Medicare.**



Years calculated June 2022 to May 2023

IN THE LAST YEAR, 2022-2023:



4,761
UNIQUE PATIENTS



11,322
PATIENT VISITS

SINCE LAUNCH IN 2017:



12,006
UNIQUE PATIENTS



44,136
PATIENT VISITS



IMPROVING & INTEGRATING CARE

DELL MED FACULTY IN THE COMMUNITY

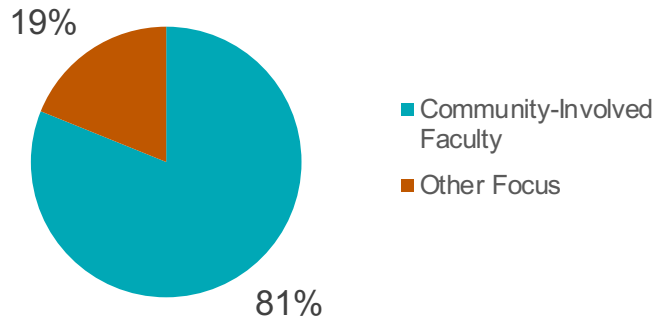
Of 323 faculty members employed by Dell Med, **262 — 81% — work** full or part time **in the community** with a range of clinical partners, including:



Ascension Seton



Integral Care



This year, they will provide 395,000 hours of care*.

Updated: July 2023

*Does not include care at UT Health Austin

ANNUALLY, FACULTY EMPLOYED BY DELL MED:



PROVIDE 395K HOURS* OF CARE

ALIGNED WITH NEED

Faculty-provided specialty care includes areas of need identified in Central Health's Equity-Focused Service Delivery Strategic Plan:

- Primary Care
- Cardiology
- Gastroenterology
- Neurology
- Psychiatry

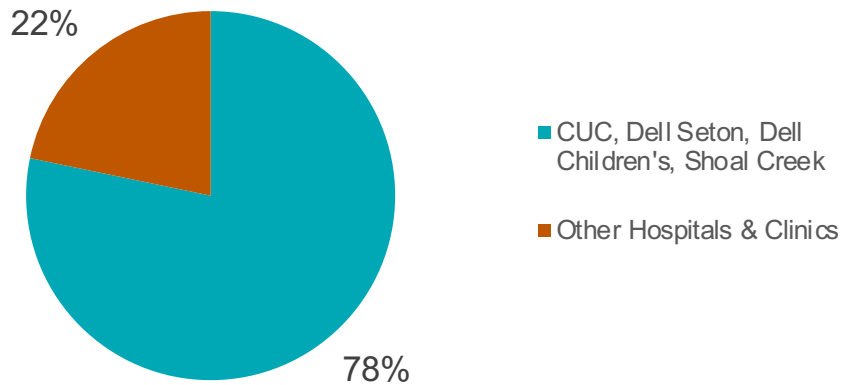


IMPROVING & INTEGRATING CARE

DELL MED RESIDENTS & FELLOWS IN THE COMMUNITY

Our **442 residents and fellows** also play a critical role in providing care locally — more than **575,000 hours** at **60-plus clinics and hospitals**.

About 450,000 hours of trainee-provided care — 78% — are at CommUnityCare Health Centers, Dell Seton Medical Center, Dell Children’s Medical Center or Ascension Seton Shoal Creek.



Academic Year 2022-2023

**IN ACADEMIC YEAR 2022-2023,
RESIDENTS & FELLOWS:**



**STAFFED 60+
CLINICS &
HOSPITALS**



**PROVIDED 575K+
HOURS OF CARE**

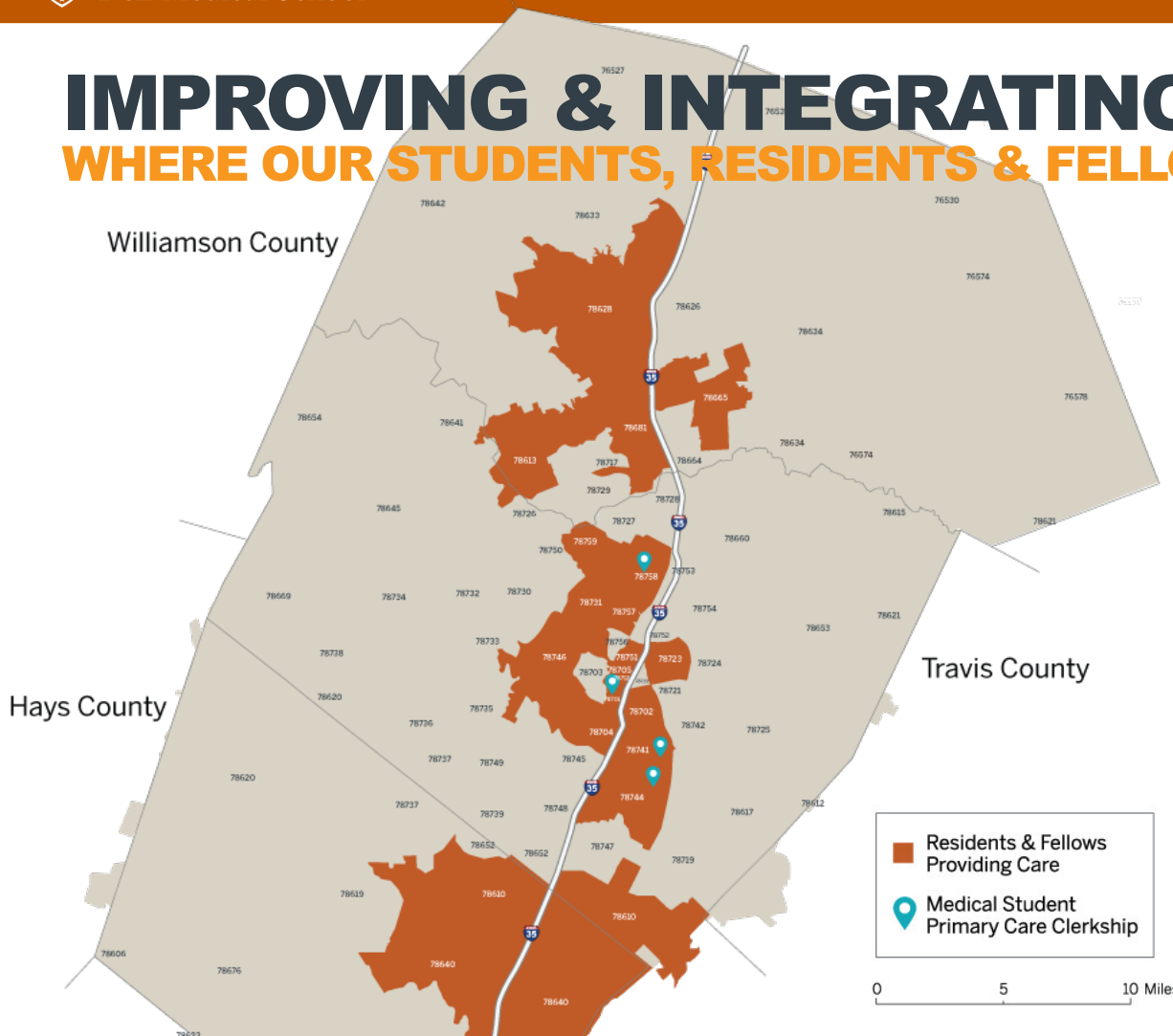
ALIGNED WITH NEED

New residency and fellowship programs address areas of need identified in Central Health’s Equity-Focused Service Delivery Strategic Plan: **Ophthalmology, Neurology, Gastroenterology and Addiction Psychiatry.**



IMPROVING & INTEGRATING CARE

WHERE OUR STUDENTS, RESIDENTS & FELLOWS PRACTICE



**SINCE 2017,
287 STUDENTS HAVE:**



**MET WITH 20K+
UNIQUE PATIENTS**



**CONDUCTED
24K+
PATIENT VISITS**



**SPENT
6K+ HOURS
WITH PATIENTS**



IMPROVING & INTEGRATING CARE: WHAT'S NEXT

ACTION & ANALYSIS PLANNING

We will **co-design** a selection of clinical practice delivery models and will **co-develop** enhanced analytic capabilities to better assess impact across the care continuum for MAP patients.

New Master Services Agreement:

- Ophthalmology
- Reproductive care not available from Ascension Seton
- Surgeries by Central Health-employed podiatrists
- Post-acute Sequelae of SARS-CoV-2 (Long COVID)
- Advanced imaging
- Future opportunities: social work, etc.

Master Professional Services Agreement (MPSA):

- Co-recruitment of Dell Med physicians
- Collaboratively advancing the Integrated Delivery System
 - Rheumatology
 - GI
 - Neurology
 - Pulmonology

WHAT WE ARE MEASURING:

- » **PATIENT VOLUMES**
- » **PATIENT DEMOGRAPHICS**
- » **PATIENT QUALITY INDICATORS**



The University of Texas at Austin
Dell Medical School

INNOVATION IN EDUCATION & TRAINING





COMMUNITY INVESTMENT DRIVES A THRIVING MEDICAL SCHOOL

Dell Med is the anchor of an emerging integrated academic health system, aiming to transform health through **clinical care**, **education** and **research**.

13 ACADEMIC DEPARTMENTS

14 CENTERS & INSTITUTES

**+60 UT HEALTH AUSTIN CLINICS &
PARTNER PROGRAMS**

717 FACULTY*

891 STAFF

442 RESIDENTS & FELLOWS

+200 STUDENTS

**323 regular faculty members employed by Dell Med & 394 employed by partners*





The University of Texas at Austin
Dell Medical School

INNOVATION IN EDUCATION & TRAINING PATHWAY PROGRAMS

Dell Med is committed to creating opportunities — what we call “pathways” — for local youth and young adults.



6 PROGRAMS

SERVING LOCAL YOUTH & YOUNG ADULTS



**500+ STUDENTS SERVED
EACH YEAR**



**4,500+ STUDENTS
INTRODUCED TO CAREERS
IN HEALTH SCIENCES**



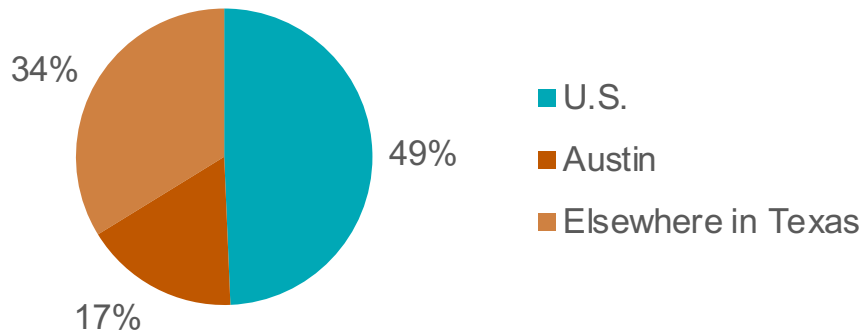


INNOVATION IN EDUCATION & TRAINING

UNDERGRADUATE MEDICAL EDUCATION (M.D. PROGRAM)

Dell Med trains physician leaders who are as comfortable taking on systemic challenges in health as they are caring for individual patients: **187 have graduated since 2020.**

More than half have **stayed in Texas** for residency:



On average, Association of American Medical Colleges data shows that 54% of doctors who complete residency in a state will go on to practice there. In Texas, that average rises to 66%.

ACCREDITATION MILESTONES:

- » **PRELIMINARY: 2015**
- » **FULL: 2020**
- » **NEXT SURVEY: 2024-2025**



My name is Woody Green.

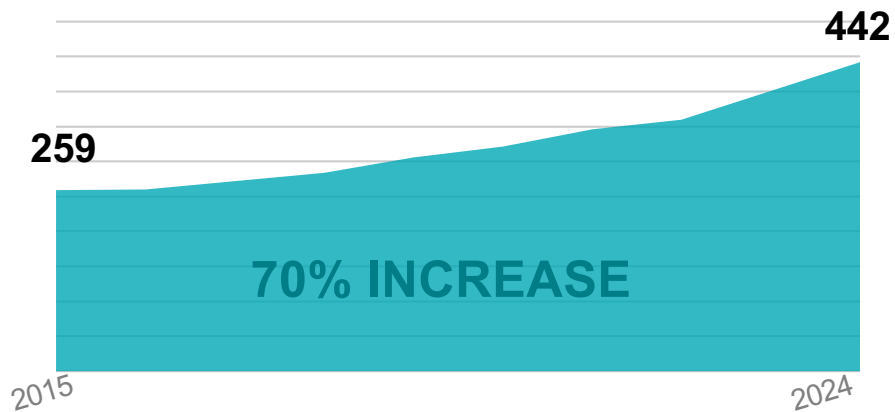
Woody Green, MD
Emergency Medicine



INNOVATION IN EDUCATION & TRAINING

GRADUATE MEDICAL EDUCATION (RESIDENTS & FELLOWS)

Graduate medical education in Central Texas is expanding: In collaboration with Ascension Seton, Dell Med has **more than tripled** its number of residency and fellowship programs — **to 48** — since 2015.

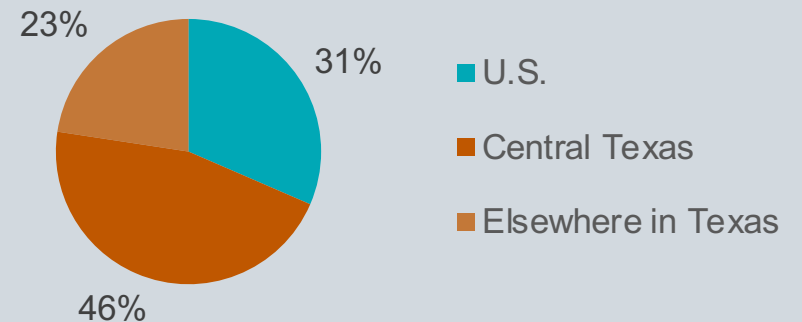


The total number of residents and fellows will be **442** — **a 70% increase** — in academic year 2024.

MORE DOCTORS FOR CENTRAL — AND ALL OF — TEXAS

Of Dell Med's **499 residency and fellowship graduates** who have immediately entered practice since 2015, nearly **half stayed in Central Texas**.

More than two-thirds stayed in state, well above the national average of 54%.





INNOVATION IN EDUCATION & TRAINING: WHAT'S NEXT

ACTION & ANALYSIS PLANNING

We will continue to focus on **expanding our graduate medical education programs** — which bring more doctors, many specializing in areas of need, to Central Texas — and on **focusing that training on** important physician competencies like **quality improvement** and **eliminating health disparities**.

WHAT WE WILL MEASURE:

- » AREAS OF SPECIALIZATION
- » DEMOGRAPHICS BY SPECIALTY
- » RETENTION TO TEXAS
- » SAFETY-NET CARE INVOLVEMENT



The University of Texas at Austin
Dell Medical School

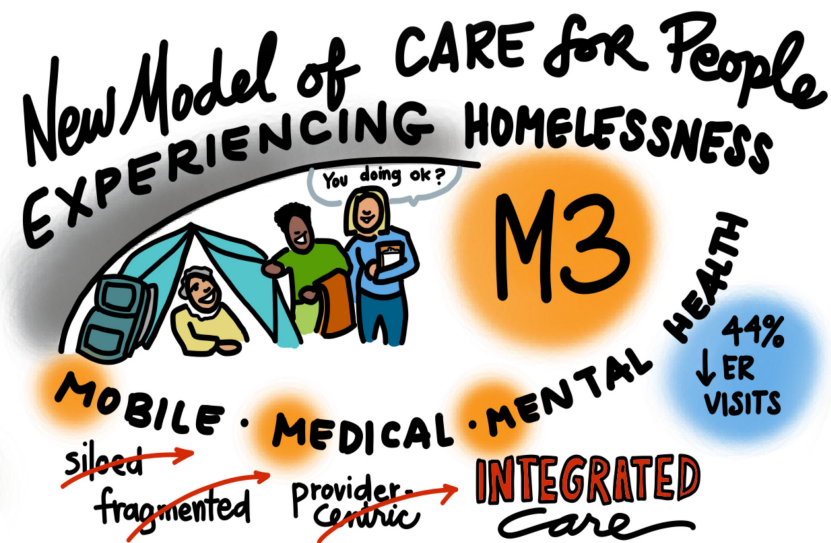
ADVANCING RESEARCH & DISCOVERY





INTEGRATED CARE FOR PEOPLE EXPERIENCING HOMELESSNESS

TIM MERCER, M.D., MPH





The University of Texas at Austin
Dell Medical School

INTEGRATED CARE FOR PEOPLE EXPERIENCING HOMELESSNESS

M3: A COLLABORATIVE MODEL

- » OUTREACH & SCREENING
- » ENROLLMENT
- » INTERVENTION
- » MEASURE OUTCOMES



Photo: Austin American-Statesman





The University of Texas at Austin
Dell Medical School

ADVANCING RESEARCH & DISCOVERY

Dell Med is home to:

97 RESEARCHERS

224 ACTIVE RESEARCH PROJECTS

**\$101MM IN SPONSORED PROJECT
EXPENDITURES* (\$30.6MM+ in 2022)**

GROWTH IN RESEARCH FUNDING

Dell Med is ranked **115** of **144** medical schools in the 2022 Blue Ridge Institute for Medical Research rankings, up from 136/141 in 2018. **Only three medical schools had a greater increase in rank during this period.**

Rankings are based solely on the total of National Institutes of Health research funding awarded to schools each year.

**Since 2014*





ADVANCING RESEARCH & DISCOVERY

Improving the health of Austin communities, including patient populations served by Central Health, is a major goal at Dell Med.

Funded research projects are led by leading investigators recruited from world-class medical institutions including Harvard, Johns Hopkins, Washington University in St. Louis and more.

Active research is targeting:

- » Stress reduction for low-income people with COPD
- » Understanding barriers in access to organ transplantation in Central Texas
- » The value of PrEP for HIV prevention in Central Texas
- » Suicide prevention for young adults in Texas
- » The impact of telehealth visits in avoiding urgent care for pregnancy among the underserved
- » Culturally tailored preventive care for individuals with risk factors for kidney disease
- » A culturally tailored, scalable asthma intervention for high-risk children



ADVANCING RESEARCH & DISCOVERY: WHAT'S NEXT

ACTION & ANALYSIS PLANNING

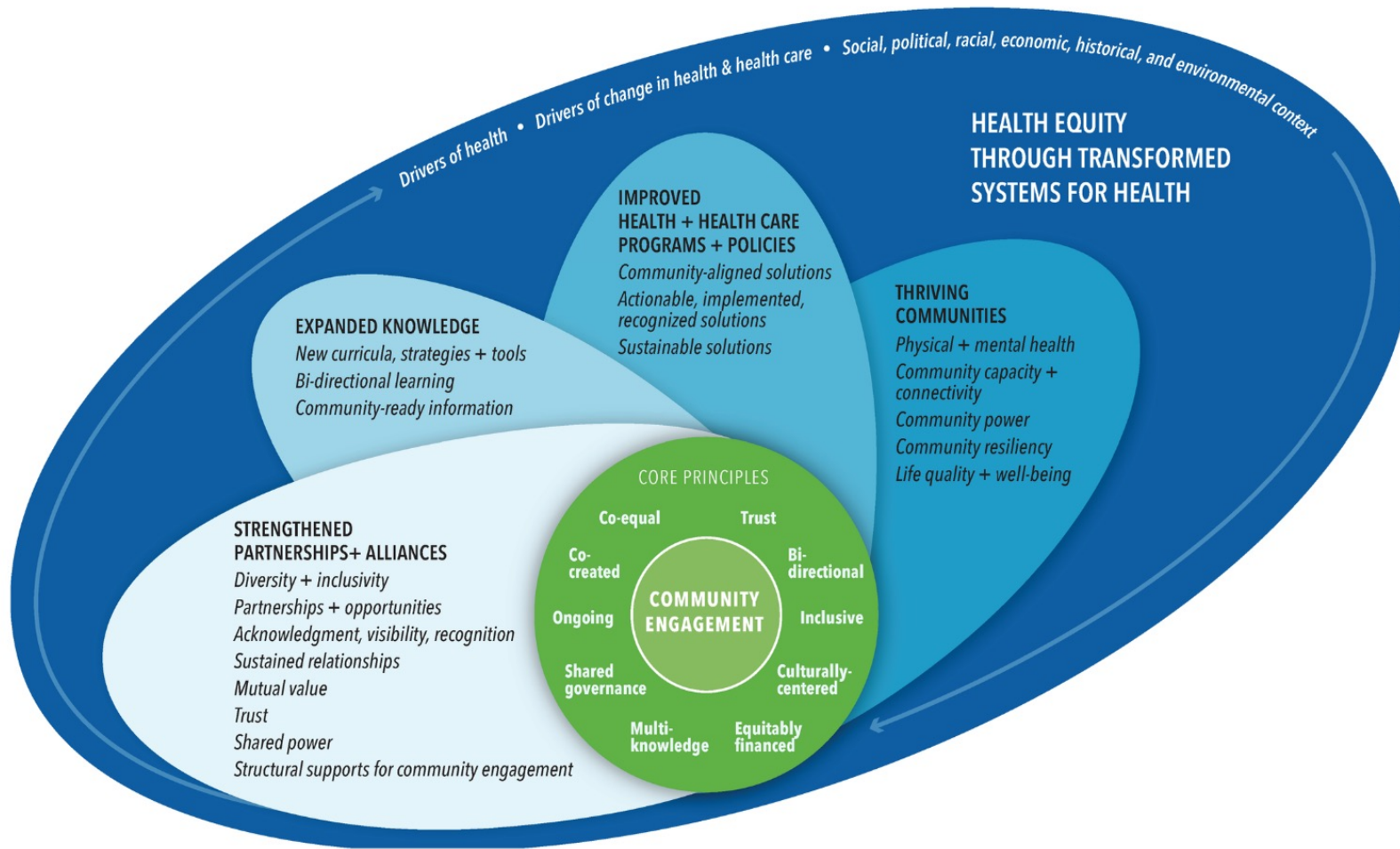
We will expand our research infrastructure with a focus on community-based participatory research and will apply principles of this type of research to measure impact to the MAP population.

In addition, work is ongoing to establish research programs at Central Health through collaborations with Dell Med and The University of Texas at Austin.

- » **Assisting with research infrastructure**
- » **Offering Institutional Review Board (IRB) participation**

WHAT WE WILL MEASURE:

- » **OUTCOMES**
- » **QUALITY**





COMMUNITY COLLABORATIONS

Dell Med is part of **18-plus community-focused collaborations** and partnerships with more than **30 community organizations**.

PREVENTIVE CARE

13,500+ individuals/patients are served through innovative, low-cost preventive care programs, health outreach efforts and innovative intervention models.

COMMUNITY-BASED REFERRALS FOR SOCIAL SERVICES

15,000+ safety-net client referrals made through a social and health information platform helping care providers identify patients' social needs and make appropriate referrals to social services.



The University of Texas at Austin
Dell Medical School

THE FUTURE OF OUR PARTNERSHIP





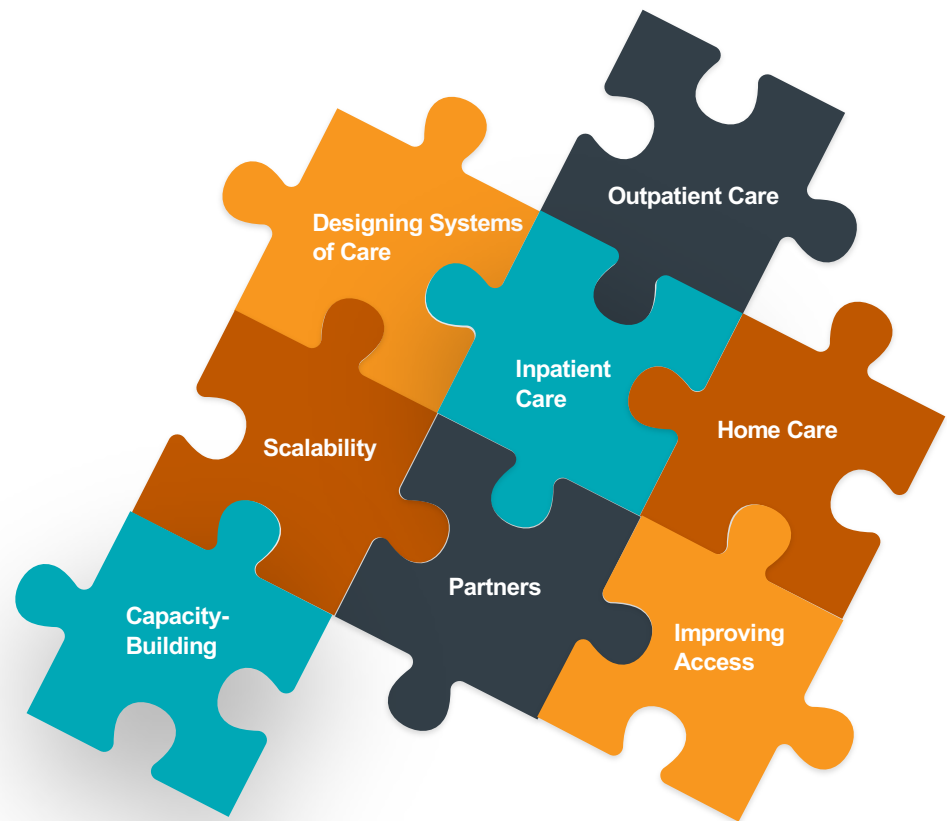
THE FUTURE OF OUR PARTNERSHIP

- Alignment and collaboration on **identified strategic priorities**
- Address prioritized **community health needs** including mental health, diabetes management and cancer prevention
- Continue successful **clinical programs** and provide **additional specialized care** more efficiently by **developing contracting**, such as:
 - Master contract agreement for specialty care
 - Professional service agreements (co-recruitment and support) for Central Health care expansion
- Medical education to provide care in hospital and community-based settings that will **encourage providers to stay** in our community and work in the safety-net system
- **Service-based research** related to quality improvement projects in safety-net community-based settings **to improve care** for the Central Health population



COLLABORATIVELY ADDRESSING GAPS IN INTEGRATED CARE DELIVERY

Together, we are working toward a **comprehensive ecosystem of care** that patients and families experience as seamless.





The University of Texas at Austin
Dell Medical School

